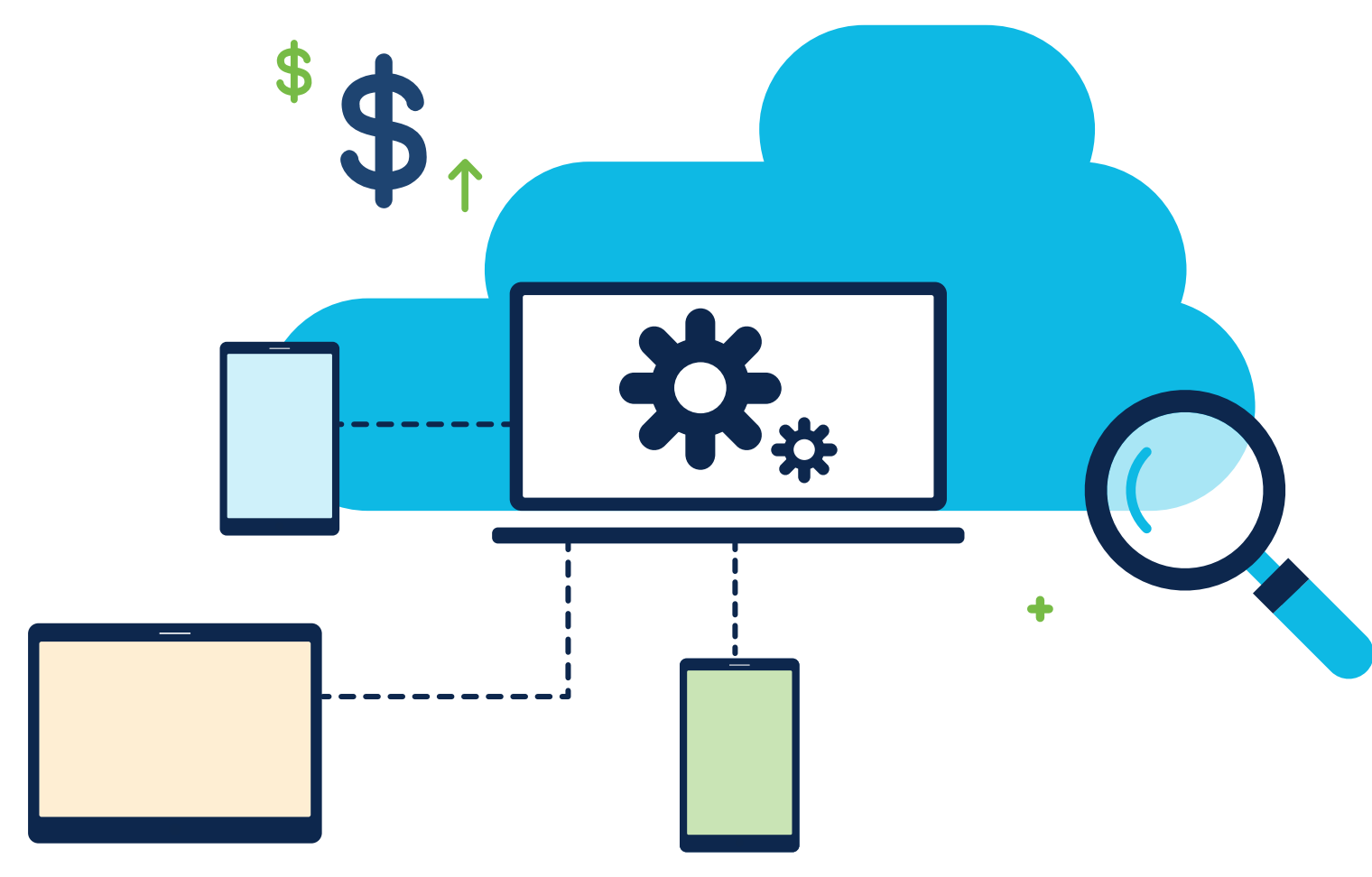


8 Ways to Enable the Cloud Edge

Use cases for the Cisco Catalyst 8000 Edge Platforms Family



Increased demands on the cloud edge call for new solutions

Legacy WAN architectures that are not automated and are complex to manage hinder the ability to adopt new technology to access cloud applications.

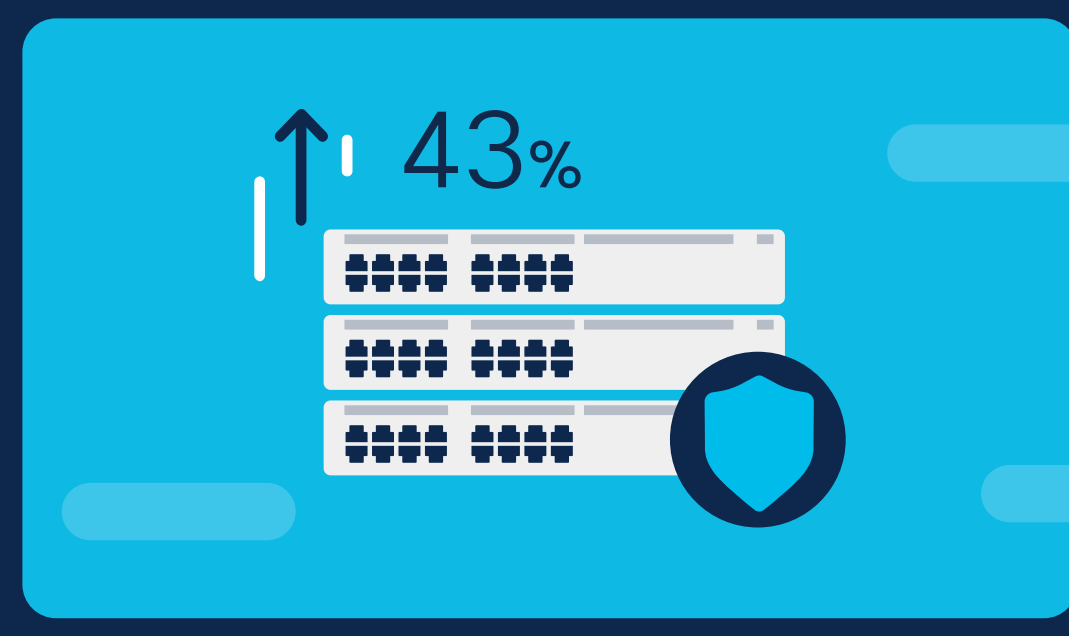
In this situation, migrating to faster connectivity or adding new services or cloud applications could increase costs, compromise security, and increase downtime.

Plus a lack of visibility when consuming applications over the internet can negatively impact the user experience and decrease productivity for a distributed workforce.



60% of organizations expect the majority of apps to be SaaS by 2021

• Cisco 2020 Global Networking Trends Report



43% of network teams identified improved embedded network security capabilities as a priority

• Cisco 2020 Global Networking Trends Report



Over 70 percent of the global population will have mobile connectivity by 2023. The total number of global mobile subscribers will grow from 5.1 billion (66 percent of population) in 2018 to 5.7 billion (71 percent of population) by 2023.

• Source: Cisco Annual Internet Report White Paper (2020)



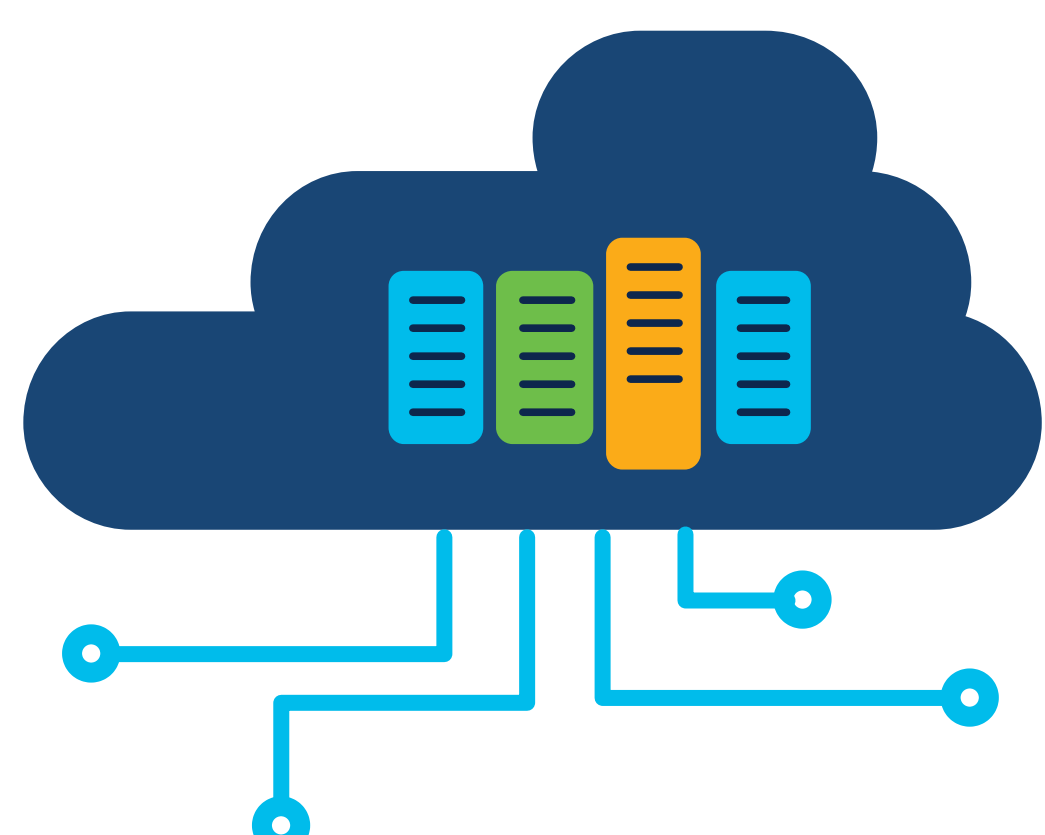
The Cisco Catalyst 8000 Edge Platforms Family delivers greater agility and automation than ever before. They offer agility, pervasive security, and visibility in a cloud-based, as-a-service solution to bridge the WAN edge to the cloud edge.

Discover 8 possibilities at the new cloud edge with the Catalyst 8000 Edge Platforms Family



Deliver an exceptional multicloud experience

Exceptional experience has become an imperative. With a distributed workforce consuming applications as a service, application optimization and SD-WAN connectivity can reduce costs and improve productivity. End-to-end visibility through analytics with access policies across the WAN provides the agility IT needs with the best user experience.



Be ready for SD-WAN

Gain secure, optimized connectivity to cloud applications with segmentation, application optimization, and Cloud OnRamp connectivity. Cisco SD-WAN delivers a carrier-grade solution for predictable application experience, with one user interface for security and connectivity across the branch, cloud, and colocation facility.



Secure your DIA connections

Deploy cloud-delivered multilayered security for direct internet access (DIA) and enhanced segmentation. The full SD-WAN security stack provides secure, direct cloud access from the branch to the cloud.¹

¹The accessible security features vary with the Cisco DNA Software subscription tier.



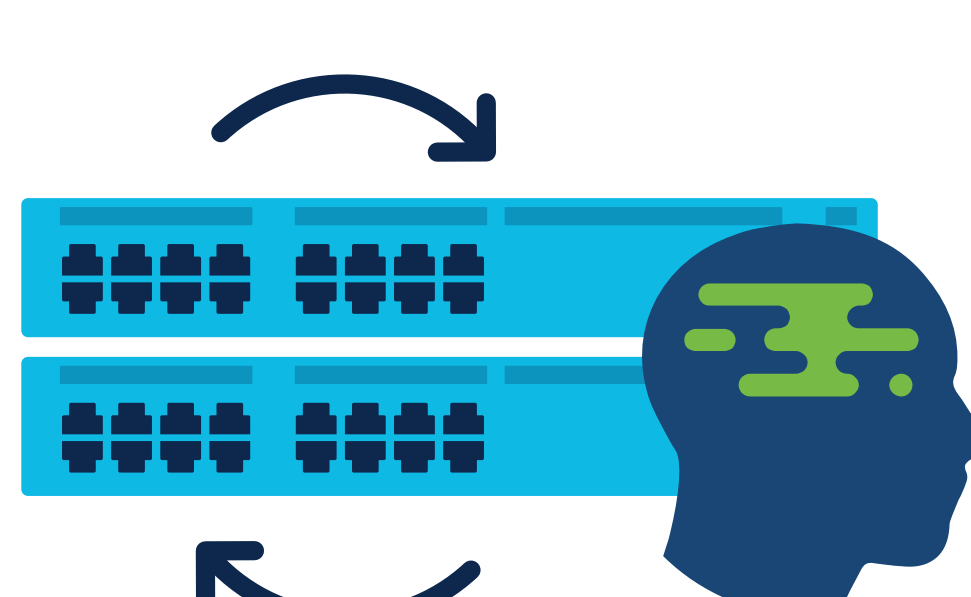
Enable a SASE architecture

With the Cisco Catalyst 8000 Edge Platforms Family, the WAN edge and cloud-based security are combined to create a robust secure access service edge (SASE) architecture. A full security stack is built into this "trustworthy solution" – it is secure by design.



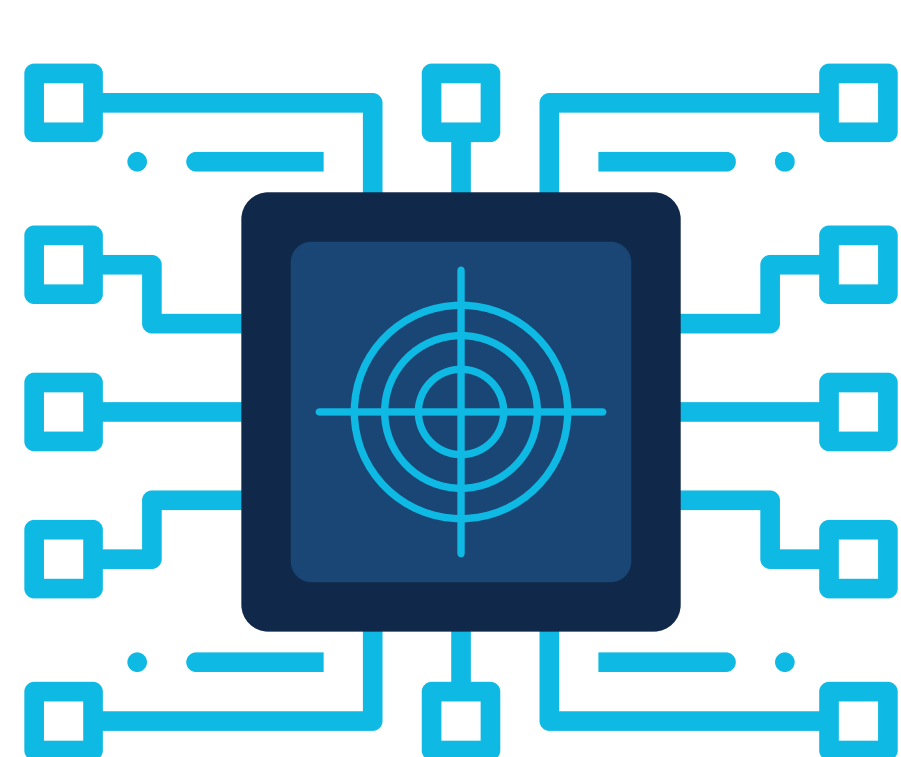
Become 5G ready at remote sites

Easily upgrade to the latest wireless WAN and cellular technology with 5G-ready platforms for uninterrupted access to cloud applications. When reliable connectivity from remote locations is not an option, deploy 5G-based edge services on the Catalyst 8000 family.



Deliver agility, assurance, and self-healing capabilities at the cloud edge

The Catalyst 8000 family has a distributed analytics architecture, with embedded, end-to-end analytics for AI/ML.



Host applications at the edge for lower latency

Host your mission-critical workloads such as Internet of Things (IoT) at the edge, and when latency in any application could impact business. Powered by a Cisco application-specific integrated circuit (ASIC) chip, and with an SD-WAN industry first – integrated 40G and 100G Ethernet ports – the Catalyst 8000 family enables you to experience three times the encrypted traffic performance. Our compact design shrinks your rack space requirements, enabling data center and colocation deployments to reduce footprint and cooling costs.



Consolidate services with Cisco a software-defined branch

Get a solution that is purpose built for cloud networking, with voice and compute capabilities at the edge. The Catalyst 8000 family supports a robust third-party technology ecosystem with security, cloud, and network management options and is open and programmable.

Experience the agility, security, and visibility you need with the Cisco Catalyst 8000 Edge Platforms Family



3x the encrypted traffic performance



3x to 4x the performance – higher processing through a customized high-speed port connection to the main processing engine



Up to 5x greater IPsec performance than current alternatives on the market

See more on the Catalyst 8000 Edge Platforms Family

[See more on the Catalyst 8000 family](#)

[Benefits of upgrading to Catalyst 8000](#)