

# Cisco Catalyst **2940** Series Switches

**The Cisco® Catalyst® 2940 Series switches are small, standalone, managed switches with eight Fast Ethernet ports and a single integrated Fast Ethernet or Gigabit Ethernet uplink. The switches are designed to be used outside the wiring closet in the end-user workspace, and feature a durable metal shell, no fan for silent operation, easy wall or under-the-desk mounting, a security lock slot to prevent theft, and an available cable guard to secure the Ethernet cables and switch.**

The Cisco Catalyst 2940 Series is extremely easy to set up and configure via Cisco Express Setup, a simple Web-Based setup utility. For more advanced configuration and ongoing management, the Cisco Catalyst 2940 Series has a console port and supports remote management protocols such as Telnet, Simple Network Management Protocol (SNMP), as well as the Cisco Cluster Management Suite (CMS), which is a free Java-enabled Web-based monitoring and configuration tool that comes embedded in the switch and can manage up to 16 switches at once. Combine this with the rich functionality of Cisco IOS® Software, and these switches provide comprehensive functionality and manageability for classrooms, conference rooms, or other very small workgroup environments.

The Cisco Catalyst 2940 Series is supported by a limited lifetime warranty and free software updates for life to keep the switch current with new standards and technologies. In summary, the Cisco Catalyst 2940 Series switches provide the lowest total cost of ownership in their product class with their durable design, simple installation and management, and award-winning Cisco support.

### Configurations

- Cisco Catalyst 2940-8TT:
  - Eight 10/100 ports
  - One 10/100/1000BASE-T port
- Cisco Catalyst 2940-8TF:
  - Eight 10/100 ports
  - One 100BASE-FX port and One 1000BASE-X Small Form-factor Pluggable (SFP) slot (only one active port at a time)

### Accessory

- Cisco Catalyst 2940 Series Cable Guard
  - Helps prevent switch theft as well as prevent tampering or removal of Ethernet cables

**Figure 1**  
 Cisco Catalyst 2940  
 Series Switches





## Designed for the End-User Environment

The Cisco Catalyst 2940 switches are designed to be used beyond the wiring closet in the end-user environment. The following features make the switches ideal for classrooms, conference rooms, or very small workgroup environments:

*Small form factor:* Only 10.6 in. long and 6.4 in. deep, this switch fits unobtrusively into tight areas or small cabinets. By using a right-angle power cord, the space required is even further reduced (see Figure 5 for size comparison to an electrical outlet).

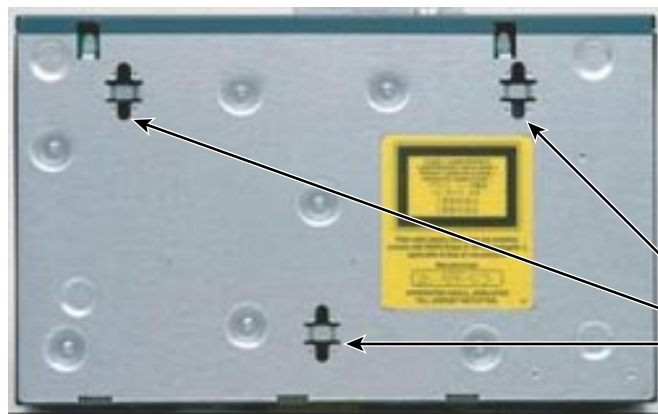
*Durability:* An all-metal shell ensures that this switch will not get damaged from incidental blows from furniture or other hardware, as well as mitigates the impact of vandals.

*Silent operation:* By employing passive cooling instead of a fan or blower, this switch is completely silent and does not disrupt quiet workspaces.

*Flexible mounting capabilities:* The switches can be mounted on a wall, on top of or under a desk or table, or on other surfaces using the mounting slots and the supplied screws (see Figure 2). In addition, for easy deployment on metal surfaces not suited for screws, a magnet is included as an additional mounting option. An internal power supply further enhances mounting flexibility because the power cord is not burdened with a large, heavy power brick.

**Figure 2**

Underside Mounting Slots



**Flexible Mounting Slots:**

- Wall
- Desk
- Under the Desk

For Easy Deployment on Metal Surfaces, a Specially Designed Mounting Magnet is Provided

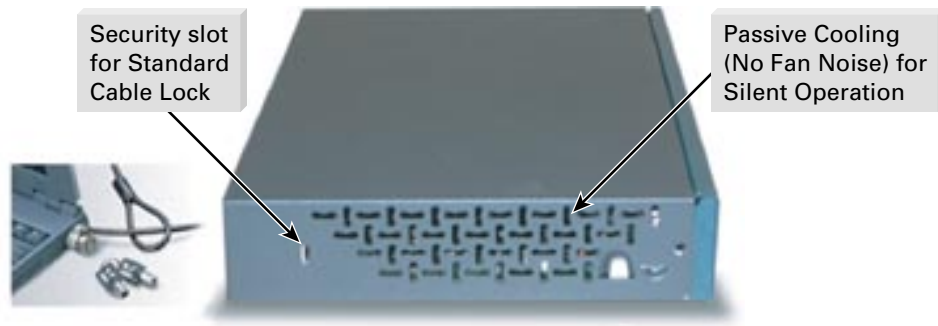


### Physical Security

A security lock slot located on each side of the switch can be used with a standard cable lock<sup>1</sup> to prevent theft (see Figure 3).

**Figure 3**

Security Lock Slot and Cable Lock



In addition, the Cisco Catalyst 2940 Series Cable Guard is available to provide extra security against theft as well as protect the Ethernet cables from tampering or removal (see Figures 4 and 5).

**Figure 4**

Cable Guard for Cisco Catalyst 2940 Series



1. Cable lock not provided by Cisco.



**Figure 5**  
Wall-Mounted Switch Using Cable Guard<sup>2</sup>



### **Low Total Cost of Ownership**

The Cisco Catalyst 2940 Series delivers a low total cost of ownership (TCO) within its product class by excelling in three key areas: manageability, ease of deployment, and investment protection.

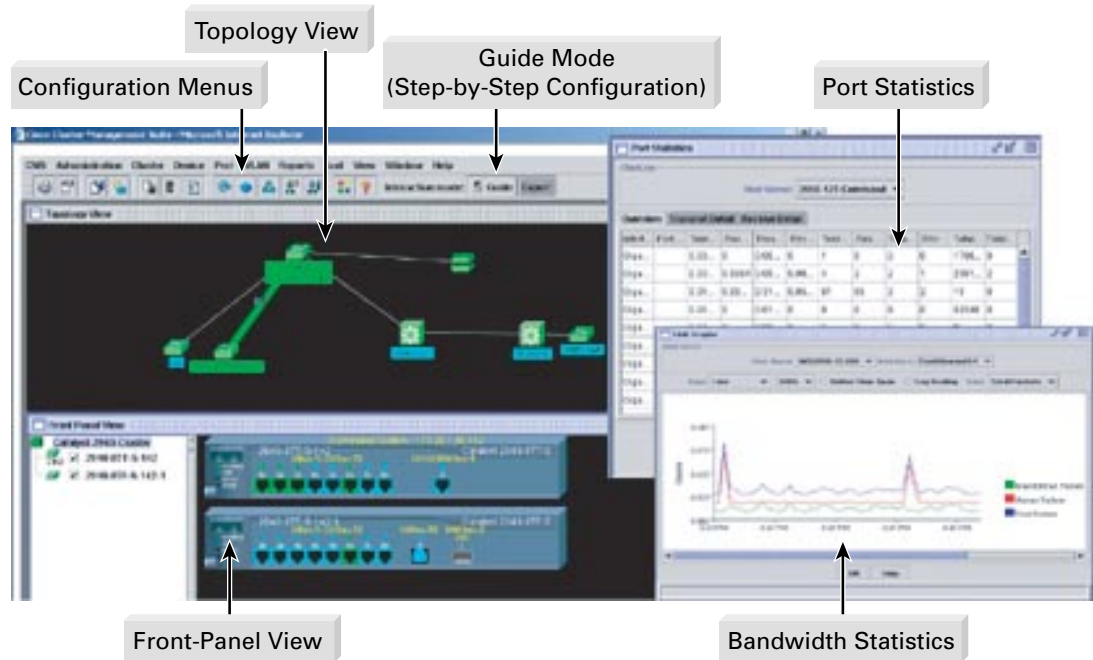
### **Manageability**

Manageability is critical for customers who are concerned with user productivity, as it allows them to proactively troubleshoot connectivity or performance issues. Typically, unmanaged switches require network administrators to physically inspect the switch when problems arise and do not provide troubleshooting tools or network statistics. In stark contrast, the Cisco Catalyst 2940 Series has robust SNMP Management Information Base (MIB) support and is fully manageable by the CiscoWorks suite of network management tools. In addition, the Cisco Cluster Management Suite is a free, Java-enabled, Web-based tool that is embedded in the Cisco Catalyst 2940 switches and provides advanced configuration and monitoring functionality for up to 16 switches at once in a very easy-to-use interface (see Figure 6). Most importantly, the Cisco Catalyst 2940 runs the same Cisco IOS Software with which so many network administrators are already familiar, thus reducing training and operating costs.

2. Please note that the switch can be wall-mounted without the cable guard using the underside mounting slots depicted in Figure 2. However, the switch and cables will not be secured as they are in Figure 5.



**Figure 6**  
Cisco Cluster Management Suite—Embedded in the Cisco Catalyst 2940 Series



### Ease of Deployment

Although the switch will operate without any configuration, a basic configuration will allow the switch to be managed remotely, giving network administrators the ability to change configurations, and also to monitor and troubleshoot the switch. This configuration can be achieved in several manners.

For automated configuration, the switch will first look for a Dynamic Host Configuration Protocol (DHCP) server to download an IP address and initial configuration when it boots up. For manual configuration, the Cisco Express Setup provides a simple Web page that allows even novice users to configure a basic setup (see Figure 7). After which, Cisco Express Setup can be disabled to ensure switch management security and the embedded Web-based Cluster Management Suite can be used to configure support for more advanced features.



**Figure 7**  
Cisco Express Setup

Cisco WS-C2940-8TT-S

Express Setup

Management Interface: VLAN1 - Default

IP Address: 10.1.1. IP Subnet Mask: 255.255.255.224

Default Gateway: 10.1.1.5

Switch Password: Confirm Switch Password:

Optional Settings

Host Name: 2940-8TT-S-142 System Location: Classroom 101

System Contact: John Doe

Telnet Access:  Enable  Disable

Telnet Password: Confirm Telnet Password:

SNMP:  Enable  Disable

SNMP Read Community: public SNMP Write Community: private

Save Cancel

3 Steps to Getting Started:

- Press the mode button 2 secs during bootup to go into Express Setup\* mode
- Connect the PC to any Ethernet port
- Fill in Web page above and Save. Then connect the switch to the network!

\*Can be disabled for security reasons

### Investment Protection—Switches Designed to Outlive Your Deployment Horizon

In contrast to low-end unmanaged switches that often have high failure rates and do not stay current with new technologies, the Cisco Catalyst 2940 Series switches are built to last. A durable all-metal shell, an exceptionally high mean time between failure (MTBF) of over 70 years, and a Limited Lifetime Warranty, help ensure that this switch will outlast your anticipated deployment timeframe.

Just as important are the three to four free major software updates per year for the life of the switch. This allows customers to benefit from new functionality as networking standards and technology evolves over the years.

Finally, the switches provide a smooth migration to Gigabit Ethernet uplinks for those customers who have not yet upgraded their Fast Ethernet uplinks. The 2940-8TT provides an autosensing 10/100/1000BASE-T port for use as a Fast Ethernet or Gigabit Ethernet uplink over copper. Meanwhile, the 2940-8TF provides fiber optic uplink connectivity via an integrated 100BASE-FX Fast Ethernet port, as well as a 1000BASE-X Gigabit SFP slot that supports Cisco's 1000BASE-SX, 1000BASE-LX, and 1000BASE-T (future) SFPs.



## Rich IOS Functionality

The Cisco Catalyst 2940 Series supports a Cisco IOS Software feature set that is nearly identical to that offered in the Standard Image Cisco Catalyst 2950 Series switches. This functionality provides:

- Support for network edge security to prevent unauthorized users
- Quality-of-service capabilities for basic data, video, and voice applications
- High-availability features to ensure user productivity
- Full network management support.

More details about the Cisco IOS functions are described below in Table 1. Currently, the only difference from the Cisco Catalyst 2950 Standard Image is that the 2940 Series supports only four virtual LANs (VLANs) and four Spanning Tree Protocol (STP) instances.

## Product Specifications

**Table 1** Product Features and Benefits

Feature	Benefit
<b>Ease of Use and Ease of Deployment</b>	
<ul style="list-style-type: none"><li>• Autoconfiguration</li><li>• Autosensing</li><li>• Autonegotiating</li><li>• Dynamic Trunking Protocol (DTP)</li><li>• Port Aggregation Protocol (PAgP) and Link Aggregation Control Protocol (LACP)</li><li>• DHCP Relay</li><li>• Default configuration</li><li>• Auto-MDIX (media-dependent interface crossed-over) (Future)</li><li>• Express Setup</li></ul>	<ul style="list-style-type: none"><li>• Switch automatically downloads configuration file using Dynamic Host Configuration Protocol (DHCP).</li><li>• Each non-SFP port detects the speed of the attached device and automatically configures the port for 10-, 100-, or 1000-Mbps operation, easing switch deployment in mixed 10, 100, and 1000BASE-T environments.</li><li>• Each non-SFP port automatically selects half- or full-duplex transmission mode to optimize bandwidth.</li><li>• Switch ports automatically configure as trunks if connected to a trunk port on another switch or router.</li><li>• Switch ports automatically configure as Cisco Fast EtherChannel<sup>®</sup> groups or IEEE 802.3ad groups when there are multiple links to another switch, router, or server.</li><li>• Allows a DHCP relay agent to broadcast DHCP requests to the network DHCP server.</li><li>• The switch can be connected to the network and can forward traffic with no configuration.</li><li>• All ports automatically adjust transmit and receive pairs depending on cable type (cross-over or straight-through) connected.</li><li>• Web browser utility allows simple switch set up so that even novices can perform a basic configuration.</li></ul>



**Table 1** Product Features and Benefits

Feature	Benefit
<b>Availability/Scalability</b>	
<b>Superior Redundancy for Fault Backup</b>	
<ul style="list-style-type: none"> <li>• IEEE 802.1D Spanning Tree Protocol</li> <li>• PortFast</li> <li>• UniDirectional Link Detection (UDLD) and Aggressive UDLD</li> <li>• Switchport Autorecovery</li> <li>• BPDU Guard</li> <li>• Spanning Tree Root Guard (STRG)</li> <li>• UplinkFast/BackboneFast</li> </ul>	<ul style="list-style-type: none"> <li>• Ensures loop-free networks simplifies network configuration and improves fault tolerance.</li> <li>• Transitions a port directly to forwarding state after linkup, allowing users to connect to the network in 2–3 seconds, rather than waiting ~50 seconds for spanning tree to resolve.</li> <li>• Unidirectional links automatically detected and disabled to avoid problems such as spanning tree loops; Aggressive Mode automatically retries the link periodically to see if it has returned to bidirectional.</li> <li>• Automatically attempts to re-enable a link that is disabled due to a network error (also known as “errdisable recovery”).</li> <li>• Shuts down Spanning-Tree Protocol PortFast-enabled interfaces when Bridge Protocol Data Units (BPDUs) are received to avoid accidental topology loops.</li> <li>• Prevents edge devices not in the network administrator’s control from becoming Spanning Tree Protocol root nodes.</li> <li>• Ensure quick fail-over recovery enhancing overall network stability and reliability.</li> </ul>
<b>Bandwidth Availability</b>	
<ul style="list-style-type: none"> <li>• Per-port broadcast, multicast, and unicast storm control</li> <li>• Per VLAN Spanning Tree Plus (PVST+)</li> <li>• VLAN Trunking Protocol (VTP) pruning</li> <li>• Internet Group Management Protocol (IGMP) Snooping</li> <li>• IGMP immediate-leave processing</li> <li>• Multicast VLAN Registration (MVR)</li> </ul>	<ul style="list-style-type: none"> <li>• Prevents faulty end stations from degrading overall systems performance.</li> <li>• Allows for Layer 2 load sharing on redundant links to utilize the full capacity of a redundant design.</li> <li>• Limits bandwidth consumption on VTP trunks by limiting broadcast traffic only to trunk links required to reach the destination devices.</li> <li>• Provides bandwidth-intensive multicast traffic to only the requestors, rather than flooding all ports. Support for IGMP version 1 and 2.</li> <li>• Faster than normal multicast leave processing, this prunes out unnecessary multicast traffic immediately after a leave request.</li> <li>• Allows multicast streams in a single networkwide multicast VLAN while subscribers remain in separate VLANs for bandwidth and security reasons.</li> </ul>
<b>Quality of Service/Control</b>	
<b>Advanced Quality of Service</b>	
<ul style="list-style-type: none"> <li>• Honor 802.1p class of service (CoS)</li> <li>• Mark/override 802.1P CoS per port</li> <li>• 4 egress queues per port</li> <li>• Weighted Round Robin (WRR) scheduling</li> <li>• Strict Priority scheduling</li> </ul>	<ul style="list-style-type: none"> <li>• Ability to prioritize traffic and put it in different queues.</li> <li>• Network administrator can enforce QoS policies, and prevent users from abusing QoS settings.</li> <li>• Enables network traffic to be put into 4 different queues, depending on the CoS priority.</li> <li>• High priority queues can be allocated more time to send traffic. However, WRR also ensures lower priority queues are not neglected.</li> <li>• Guarantees that the highest-priority packets are serviced ahead of all other traffic. Particularly useful for time-sensitive applications like voice over IP.</li> </ul>



**Table 1** Product Features and Benefits

Feature	Benefit
<b>Security</b>	
<b>Network Management Security</b>	
<ul style="list-style-type: none"> <li>• VLAN1 minimization</li> <li>• TACACS+ and RADIUS Authentication</li>   <li>• Multilevel management levels</li> </ul>	<ul style="list-style-type: none"> <li>• Allows VLAN1 to be disabled on any individual VLAN trunk link.</li> <li>• Terminal Access Controller Access Control System Plus (TACACS+) and Remote Authentication Dial-In User Service (RADIUS) authentication enable centralized control of switch administration and management.</li> <li>• Allows for 15 levels of switch management authorization, ranging from read-only to full read/write capabilities.</li> </ul>
<b>Network Edge Security</b>	
<ul style="list-style-type: none"> <li>• IEEE 802.1x</li> <li>• Voice VLAN 802.1x bypass</li>   <li>• Private VLAN Edge</li>   <li>• SPAN for IDS</li>   <li>• MAC address notification</li>   <li>• Port security</li>   <li>• Autotrusted boundary</li>   <li>• IGMP filtering</li>   <li>• Dynamic VLAN Assignment</li> </ul>	<ul style="list-style-type: none"> <li>• Allows dynamic, port-based security, providing user authentication.</li> <li>• Permits an IP phone to access the voice VLAN irrespective of the authorized or unauthorized state of the port.</li> <li>• Provides security and isolation between switch ports, which helps ensure that users cannot snoop on other users' traffic.</li> <li>• Bidirectional data support on the Switched Port Analyzer (SPAN) port allows Cisco Secure Intrusion Detection System (IDS) to take action when an intruder is detected.</li> <li>• Allows administrators to be notified of users added to or removed from the network. Good for tracking location of users or stolen laptops.</li> <li>• Secures the access to an access or trunk port based on MAC address. After a specific timeframe, the aging feature removes the MAC address from the switch to allow another device to connect to the same port.</li> <li>• Ability to trust the QoS priority settings if an IP phone is present and to disable the trust setting in the event that the IP phone is removed, thereby preventing a malicious user from overriding prioritization policies in the network.</li> <li>• Provides multicast authentication by filtering out non-subscribers and limits the number of concurrent multicast streams available per port.</li> <li>• Using VLAN Membership Policy Server (VMPS) client functionality, ports can be assigned to VLANs based on the MAC address connected to the port or a user login (using the CiscoWorks User Registration Tool).</li> </ul>



**Table 1** Product Features and Benefits

Feature	Benefit
<b>Manageability</b>	
<b>Superior Manageability</b>	
<ul style="list-style-type: none"> <li>• SNMPv1/2/3 (non-crypto) and robust MIB support</li> <li>• Cisco IOS CLI</li> <li>• Telnet and console access</li> <li>• Service Assurance Agent (SAA)</li> <li>• 802.1q VLANs</li> <li>• Voice VLAN</li> <li>• VTP</li> <li>• Remote Monitoring (RMON)</li> <li>• Layer 2 Traceroute</li> <li>• Switch Port Analyzer (SPAN) port</li> <li>• Trivial File Transfer Protocol (TFTP)</li> <li>• Network Time Protocol (NTP)</li> <li>• Multifunction LEDs per port</li> <li>• Switch-level Status LEDs</li> </ul>	<ul style="list-style-type: none"> <li>• Enables full management of switches via standard network management tools.</li> <li>• Provides common user interface and command set with all Cisco routers and Cisco Catalyst desktop switches, minimizing training costs.</li> <li>• Telnet provides comprehensive remote in-band management, while console port enables out-of-band management.</li> <li>• Facilitates service-level management by providing network response time measurements.</li> <li>• Up to 4 802.1Q VLANs per switch, as well as 1005 VLAN IDs. Any port can be a VLAN trunk port.</li> <li>• Simplifies IP telephony installations by keeping voice traffic on a separate VLAN for easier administration and troubleshooting.</li> <li>• Propagates VLAN and trunk configuration across all switches in the network.</li> <li>• For enhanced traffic management, monitoring, and analysis, the Embedded Remote Monitoring (RMON) software agent supports 4 RMON groups (history, statistics, alarms, and events). All 9 RMON groups are supported when using SPAN to mirror traffic to an RMON probe or network analyzer.</li> <li>• Eases troubleshooting by identifying the physical path that a packet takes from source to destination.</li> <li>• Mirrors traffic from a port or group of ports to a single destination port, where a network analyzer or RMON probe can be connected. 1 SPAN session only.</li> <li>• Reduces the cost of administering software upgrades by downloading from a centralized server.</li> <li>• Provides an accurate and consistent timestamp to all intranet switches.</li> <li>• For port up/down status; half-duplex and full-duplex mode; and 10BASE-T, 100BASE-TX, and 1000BASE-T indication.</li> <li>• Provides easy visual indication of system integrity status.</li> </ul>



**Table 1** Product Features and Benefits

Feature	Benefit
<p><b>Cluster Management Suite</b>  <b>Web-based Management</b></p> <ul style="list-style-type: none"> <li>• Supports up to 16 switches with single IP address</li> <li>• 1-click software upgrade</li> <li>• Configuration cloning</li> <li>• Guide Mode</li> <li>• Context-sensitive Help</li> <li>• Topology map</li> <li>• Front panel view</li> <li>• Multidevice and multiport configuration</li> <li>• Cisco Aironet® Wireless Access Point Management</li> <li>• User-personalized interface</li> <li>• Alarm notification</li> </ul>	<ul style="list-style-type: none"> <li>• Provides an easy-to-use, Web-based management interface through a standard Web browser. Simplifies management and saves time, without the limitation of being physically located in the same wiring closet.</li> <li>• Entire cluster of Cisco Catalyst 2940 switches can be upgraded at once.</li> <li>• Enables rapid deployment of networks.</li> <li>• Makes it easy to configure powerful advanced features by providing step-by-step instructions.</li> <li>• Saves time by providing help on the feature currently being used.</li> <li>• Provides a view of up to 16 switches interconnected and their up/down status, and link speeds and settings.</li> <li>• Provides a front panel view of up to 16 switches and their up/down status of ports. Also can be used to select ports across all the switches to be configured simultaneously.</li> <li>• Saves time and resources.</li> <li>• Web-based management for Aironet devices can be launched by clicking the relevant icon in the topology map.</li> <li>• Customize polling intervals, table views, and other settings within Cisco CMS Software and retains these settings.</li> <li>• Automated e-mail notification of network errors and alarm thresholds.</li> </ul>
<p><b>CiscoWorks Support</b></p> <ul style="list-style-type: none"> <li>• Supported by CiscoWorks LAN Management Solution (LMS), Access Control Server (ACS), Small Network Management Solution (SNMS), and CiscoWorks for Windows</li> <li>• Cisco Discovery Protocol (CDP) v1, v2</li> </ul>	<ul style="list-style-type: none"> <li>• CiscoWorks network-management software provides management capabilities on a per-port and per-switch basis, providing a common management interface for all Cisco routers, switches, hubs, and other Cisco devices. The CiscoWorks tools save time and reduce human errors.</li> <li>• Enable a CiscoWorks network-management station to automatically discover and map switches.</li> </ul>



**Table 2** Hardware Specifications

Description	Specification
<b>Performance</b>	<ul style="list-style-type: none"> <li>• 3.6 Gbps maximum forwarding bandwidth</li> <li>• 2.7 Mpps wire-speed forwarding rate (based on 64-byte packets)</li> <li>• 16 MB DRAM and 8 MB Flash memory</li> <li>• Configurable up to 8000 MAC addresses</li> <li>• Configurable up to 255 multicast groups</li> <li>• Configurable maximum transmission unit (MTU) of up to 1500 bytes</li> <li>• 4 802.1Q VLANs</li> <li>• 1005 VLAN IDs</li> </ul>
<b>100BASE-FX fiber-port power levels</b>	<p>Optical transmitter wavelength: 1300 nm (nanometer)</p> <p>Optical receiver sensitivity for 50/125-micron cabling: –33.5 to –11.8 dBm (decibel milliwatt)</p> <p>Optical receiver sensitivity for 62.5/125-micron cabling: –33.5 to –11.8 dBm</p> <p>Optical transmitter power for 50/125-micron cabling: –23.5 to –14 dBm</p> <p>Optical transmitter power for 62.5/125-micron cabling: –20 to –14 dBm</p>
<b>Connectors and cabling</b>	<ul style="list-style-type: none"> <li>• 10BASE-T ports: RJ-45 connectors; 2-pair Category 3, 4, or 5 unshielded twisted-pair (UTP) cabling</li> <li>• 100BASE-TX ports: RJ-45 connectors; 2-pair Category 5 UTP cabling</li> <li>• 1000BASE-T ports: RJ-45; 2-pair Category 5 UTP cabling</li> <li>• 100BASE-FX ports: MT-RJ connectors, 50/125 or 62.5/125 micron multimode fiber-optic cabling</li> <li>• 1000BASE-SX, -LX/LH, -T SFP-based port: LC fiber connectors, single-mode or multimode fiber, and RJ-45 connector for copper</li> <li>• Management console port: Use RJ-45-to-DB9 cable for PC connections</li> </ul>
<b>Power connectors</b>	<ul style="list-style-type: none"> <li>• The internal power supply is an autoranging unit, supporting input voltages between 100 and 240 volts alternating current (VAC)</li> <li>• Use the supplied AC power cord to connect the AC power connector to an AC power outlet</li> </ul>
<b>Indicators</b>	<ul style="list-style-type: none"> <li>• Per-port status LEDs: link integrity, disabled, activity, speed, and full-duplex indications</li> <li>• System-status LED</li> </ul>
<b>Dimensions</b>	(H x W x D) 1.55 x 10.6 x 6.42 in. (3.94 x 26.92 x 16.3 cm)
<b>Weight</b>	3 lb (1.36 kg)
<b>Environmental Ranges</b>	<ul style="list-style-type: none"> <li>• Operating temperature 32 to 113°F (0 to 45°C)</li> <li>• Storage temperature –13 to 158°F (–25 to 70°C)</li> <li>• Operating humidity 10 to 85% (noncondensing)</li> <li>• Operating altitude up to 10,000 ft (3000 m)</li> <li>• Storage altitude up to 15,000 ft (4570 m)</li> </ul>
<b>Acoustic Noise</b>	International Organization for Standardization (ISO) 7779: bystander position operating to an ambient temperature of 30°C: 0 decibels (dB)
<b>Telco CLEI Code</b>	<ul style="list-style-type: none"> <li>• 2940-8TF: CNMEG00ARA</li> <li>• 2940-8TT: CNMEH00ARA</li> </ul>



**Table 2** Hardware Specifications

Description	Specification
<b>Mean Time Between Failure (MTBF)—Predicted</b>	<ul style="list-style-type: none"><li>• 2940-8TF: 636,000 hrs (73 yrs)</li><li>• 2940-8TT: 771,000 hrs (88 yrs)</li></ul>
<b>Warranty</b>	<ul style="list-style-type: none"><li>• Limited lifetime warranty</li></ul>

**Table 3** Power Specifications

Description	Specification
<b>Power Consumption</b>	15W (maximum) 50 Btus per hour
<b>AC input voltage/frequency</b>	100 to 240 VAC (autoranging), 50 to 60 Hz

**Table 4** Management and Standards Support

Description	Specification
<b>Management Information Bases (MIBs)</b>	BRIDGE-MIB.my ENTITY-MIB.my CISCO-2900-MIB.my CISCO-CDP-MIB.my CISCO-CONFIG-MAN-MIB.my CISCO-IMAGE-MIB.my CISCO-MEMORY-POOL-MIB.my CISCO-PING-MIB.my CISCO-PRODUCTS-MIB.my CISCO-TCP-MIB.my IF-MIB (RFC 1573) OLD-CISCO-CHASSIS-MIB.my OLD-CISCO-CPU-MIB.my OLD-CISCO-INTERFACES-MIB.my OLD-CISCO-IP-MIB.my OLD-CISCO-MEMORY-MIB.my OLD-CISCO-SYSTEM-MIB.my OLD-CISCO-TCP-MIB.my OLD-CISCO-TS-MIB.my RFC1213-MIB (MIB-II) RFC1398-MIB (ETHERNET-MIB) RMON-MIB (RFC 1757)- 4 Groups SNMPv2-MIB.my TCP-MIB.my UDP-MIB.my CISCO-VLAN-MEMBERSHIP-MIB.my CISCO-SMI.my CISCO-TC.my CISCO-VTP-MIB.my IANAifType-MIB.my



**Table 4** Management and Standards Support

Description	Specification
<b>Management Information Bases (MIBs)</b>	RS-232-MIB.my SNMPv2-SMI.my SNMPv2-TC.my CISCO-STP-EXTENSIONS-MIB.my CISCO-CLUSTER-MIB.my CISCO-FLASH-MIB.my CISCO-PROCESS-MIB.my CISCO-MAC-NOTIFICATION-MIB.my CISCO-PAGP-MIB.my CISCO-IGMP-FILTER-MIB CISCO-RTTMON-MIB CISCO-BULK-FILE-MIB CISCO-CONFIG-COPY-MIB CISCO-ENVMON-MIB CISCO-FTP-CLIENT-MIB CISCO-SYSLOG-MIB CISCO-STACKMAKER-MIB CISCO-PORT-SECURITY-MIB.my
<b>Standards</b>	IEEE 802.1x IEEE 802.3ad IEEE 802.3x full duplex on 10BASE-T, 100BASE-TX, and 1000BASE-T ports IEEE 802.1D Spanning-Tree Protocol IEEE 802.1p CoS Prioritization IEEE 802.1Q VLAN IEEE 802.3 10BASE-T specification IEEE 802.3u 100BASE-TX specification IEEE 802.3ab 1000BASE-T specification IEEE 802.3z 1000BASE-X specification 1000BASE-SX 1000BASE-LX/LH RMON I and II standards SNMPv1, SNMPv2c, SNMPv3 (non-crypto)

**Table 5** Compliance

<b>Safety certifications</b>	<ul style="list-style-type: none"> <li>• UL to UL 60950, Third Edition</li> <li>• C-UL to CAN/CSA C22.2 No. 60950-00, Third Edition</li> <li>• TUV/GS to EN 60950:2000</li> <li>• CB to IEC 60950 with all country deviations</li> <li>• NOM to NOM-019-SCFI</li> <li>• CE Marking</li> </ul>
------------------------------	-----------------------------------------------------------------------------------------------------------------------------------------------------------------------------------------------------------------------------------------------------------------------------------------------



**Table 5** Compliance

<b>Electromagnetic Compatability</b>	<ul style="list-style-type: none"> <li>• FCC Part 15 Class A</li> <li>• EN 55022: 1998 (CISPR22)</li> <li>• EN 55024: 1998 (CISPR24)</li> <li>• VCCI Class A</li> <li>• AS/NZS 3548 Class A</li> <li>• CE</li> <li>• CNS 13438 Class A</li> <li>• MIC</li> </ul>
--------------------------------------	------------------------------------------------------------------------------------------------------------------------------------------------------------------------------------------------------------------------------------------------------------------

**Service and Support**

Cisco Systems® is committed to minimizing total cost of ownership (TCO). Cisco offers a portfolio of Technical Support Services to help ensure that Cisco products operate efficiently, remain highly available, and benefit from the most up-to-date system software. The services and support programs described in the table below are available as part of the Cisco Desktop Switching Service and Support solution, and are available directly from Cisco and through resellers.

**Table 6** Service and Support Products, Features, and Benefits

Service and Support	Features	Benefits
<b>Advanced Services</b>		
Cisco Total Implementation Solutions (TIS), available direct from Cisco  Cisco Packaged TIS, available through resellers	<ul style="list-style-type: none"> <li>• Project management</li> <li>• Site survey, configuration, and deployment</li> <li>• Installation, test, and cutover</li> <li>• Training</li> <li>• Major moves, adds, and changes</li> <li>• Design review and product staging</li> </ul>	<ul style="list-style-type: none"> <li>• Supplements existing staff</li> <li>• Ensures functions meet needs</li> <li>• Mitigates risk</li> </ul>
<b>Technical Support Services</b>		
Cisco SMARTnet™ and SMARTnet Onsite, available direct from Cisco  Cisco Packaged SMARTnet, available through resellers	<ul style="list-style-type: none"> <li>• 24-hour access to software updates</li> <li>• Web access to technical repositories</li> <li>• Telephone support through the Cisco Technical Assistance Center (TAC)</li> <li>• Advance replacement of hardware parts</li> </ul>	<ul style="list-style-type: none"> <li>• Enables proactive or expedited issue resolution</li> <li>• Lowers TCO by taking advantage of Cisco expertise and knowledge</li> <li>• Minimizes network downtime</li> </ul>



**Table 7** Ordering Information

Product Number	Product Description
<b>WS-C2940-8TF-S</b>	<ul style="list-style-type: none"><li>• 8 Ethernet 10/100 ports + 1 Ethernet 100BASE-FX + 1 1000BASE-X SFP port (1 uplink active at a time)</li><li>• Wall-mountable, standalone, managed switch</li></ul>
<b>WS-C2940-8TT-S</b>	<ul style="list-style-type: none"><li>• 8 Ethernet 10/100 ports + 1 Ethernet 10/100/1000BASE-T</li><li>• Wall-mountable, standalone, managed switch</li></ul>
<b>CABLEGUARD-C2940=</b>	<ul style="list-style-type: none"><li>• Cable Guard for the Cisco Catalyst 2940 Series Switches secures switch and prevents tampering with Ethernet cable jacks</li></ul>

**Table 8** Compatible Small Form-Factor Pluggable (SFP) Transceivers for the Cisco Catalyst 2940-8TF Switch

Product Number	Product Description
<b>GLC-LH-SM=</b>	1000BASE-LX/LH Gigabit Ethernet SFP, LC connector, LH transceiver
<b>GLC-SX-MM=</b>	1000BASE-SX Gigabit Ethernet SFP, LC connector, SX transceiver

**Table 9** Compatible Fiber Patch Cables for the Cisco Catalyst 2940-8TF Switch MT-RJ Connectors

Product Number	Product Description
<b>CAB-MTRJ-SC-MM-1M=</b>	1-meter, MT-RJ-to-SC multimode cable
<b>CAB-MTRJ-ST-MM-1M=</b>	1-meter, MT-RJ-to-ST multimode cable
<b>CAB-MTRJ-SC-MM-3M=</b>	3-meter, MT-RJ-to-SC multimode cable
<b>CAB-MTRJ-ST-MM-3M=</b>	3-meter, MT-RJ-to-ST multimode cable
<b>CAB-MTRJ-SC-MM-5M=</b>	5-meter, MT-RJ-to-SC multimode cable
<b>CAB-MTRJ-ST-MM-5M=</b>	5-meter, MT-RJ-to-ST multimode cable

For more information about Cisco products, contact:

- United States and Canada: (toll free) 800 553-NETS (6387)
- Europe: 32 2 778 4242
- Australia: 612 9935 4107
- Other: 408 526-7209
- World Wide Web URL:  
<http://www.cisco.com>



**Corporate Headquarters**  
Cisco Systems, Inc.  
170 West Tasman Drive  
San Jose, CA 95134-1706  
USA  
www.cisco.com  
Tel: 408 526-4000  
800 553-NETS (6387)  
Fax: 408 526-4100

**European Headquarters**  
Cisco Systems International BV  
Haarlerbergpark  
Haarlerbergweg 13-19  
1101 CH Amsterdam  
The Netherlands  
www-europe.cisco.com  
Tel: 31 0 20 357 1000  
Fax: 31 0 20 357 1100

**Americas Headquarters**  
Cisco Systems, Inc.  
170 West Tasman Drive  
San Jose, CA 95134-1706  
USA  
www.cisco.com  
Tel: 408 526-7660  
Fax: 408 527-0883

**Asia Pacific Headquarters**  
Cisco Systems, Inc.  
Capital Tower  
168 Robinson Road  
#22-01 to #29-01  
Singapore 068912  
www.cisco.com  
Tel: +65 6317 7777  
Fax: +65 6317 7799

Cisco Systems has more than 200 offices in the following countries and regions. Addresses, phone numbers, and fax numbers are listed on the  
**Cisco Web site at [www.cisco.com/go/offices](http://www.cisco.com/go/offices)**

Argentina • Australia • Austria • Belgium • Brazil • Bulgaria • Canada • Chile • China PRC • Colombia • Costa Rica • Croatia  
Czech Republic • Denmark • Dubai, UAE • Finland • France • Germany • Greece • Hong Kong SAR • Hungary • India • Indonesia • Ireland  
Israel • Italy • Japan • Korea • Luxembourg • Malaysia • Mexico • The Netherlands • New Zealand • Norway • Peru • Philippines • Poland  
Portugal • Puerto Rico • Romania • Russia • Saudi Arabia • Scotland • Singapore • Slovakia • Slovenia • South Africa • Spain • Sweden  
Switzerland • Taiwan • Thailand • Turkey • Ukraine • United Kingdom • United States • Venezuela • Vietnam • Zimbabwe

All contents are Copyright © 1992–2003 Cisco Systems, Inc. All rights reserved. Aironet, Catalyst, Cisco, Cisco IOS, Cisco Systems, the Cisco Systems logo, EtherChannel, and SMARTnet are registered trademarks of Cisco Systems, Inc. and/or its affiliates in the U.S. and certain other countries.

All other trademarks mentioned in this document or Web site are the property of their respective owners. The use of the word partner does not imply a partnership relationship between Cisco and any other company.  
(0304R) WH/LW4765 06/03